

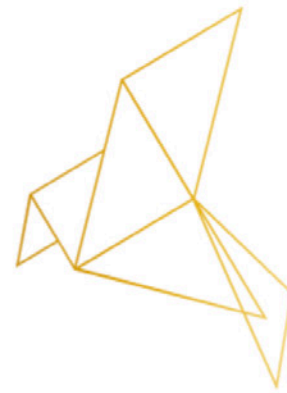
Please confirm that we will have full control in CMS to allocate “number of bedrooms” to each individual unit in the CMS.

Please confirm that this number will change according to number of apartments available.

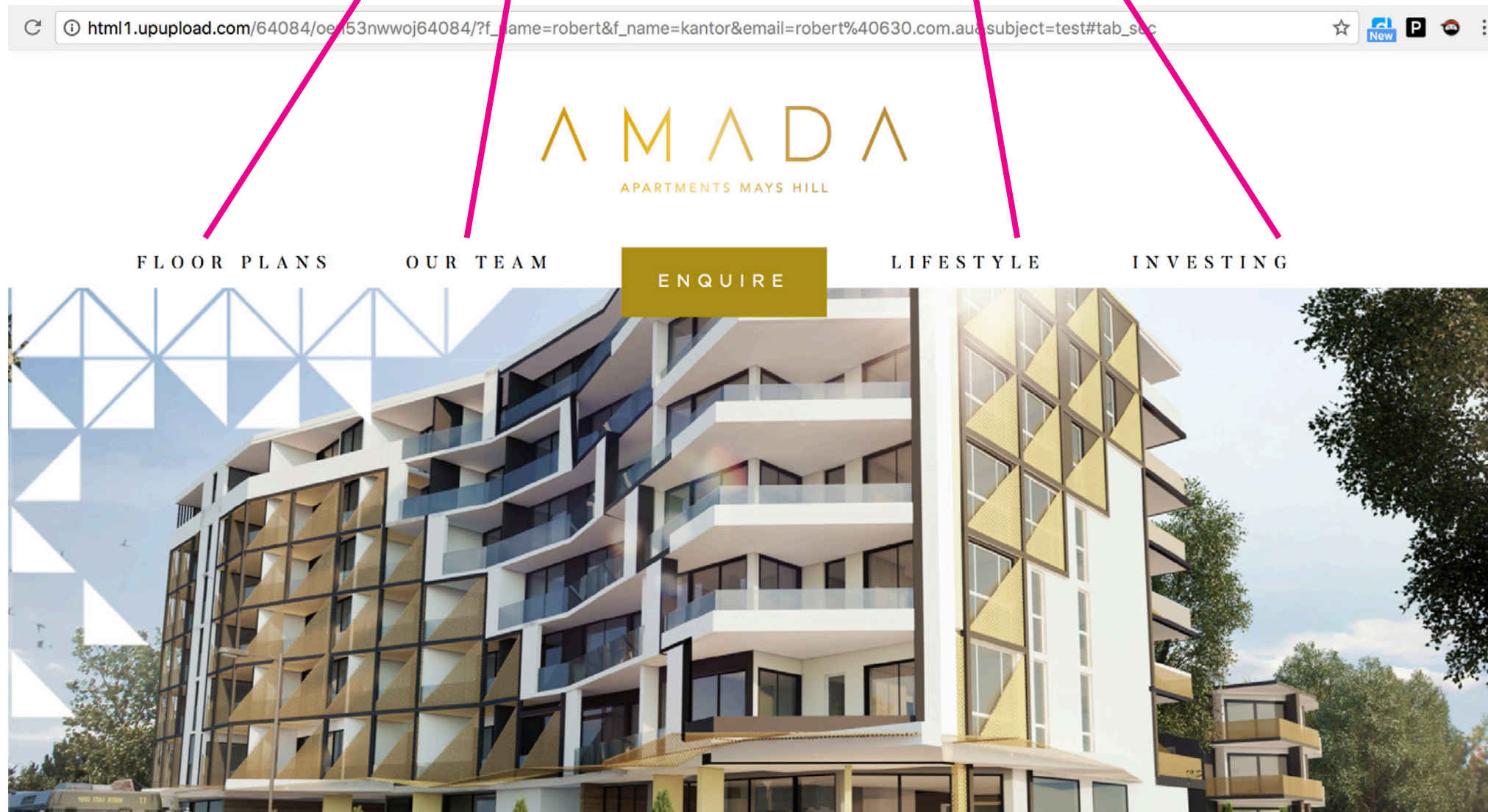
If there are apartments available on all floors, I assume this section will expand down to reveal all sections ?

The screenshot displays the AMADA APARTMENTS MAYS HILL interface. At the top, the logo is centered. Below it, a text prompt reads: "Select the number of bedrooms you'd like, then click the available apartments for details." A filter bar contains "BEDROOMS" with options 1, 2 (selected), and 3. To the right, it shows "AVAILABLE APARTMENTS" with the number 25. Below the filter bar, three floor plan sections are visible: "LEVEL 2", "LEVEL 4", and "LEVEL 5". Each section shows a grid of apartment units. In the Level 2 plan, one unit is highlighted in gold. In the Level 5 plan, one unit is highlighted in gold. Three red arrows point from the text annotations to the filter bar, the Level 2 plan, and the Level 5 plan.

Drop shadow under header is too strong - please make it more subtle



Please change this font to match font style within the "ENQUIRE" button.





User must be able to pause scrolling.  
Please add ○○○○ gallery functionality.

Scrolling too fast. Please make 5 seconds  
between scrolling images.

